

Under the web-address <https://www.process-informatik.de> are product specific documentations or software-driver/-tools available to download.
If you have questions or suggestions about the product, please don't hesitate to contact us.

Process-Informatik Entwicklungsgesellschaft mbH

Im Gewerbegebiet 1

DE-73116 Wäschenbeuren

+49 (0) 7172-92666-0

info@process-informatik.de

<https://www.process-informatik.de>

Menutree Website:

- + Products / docu / downloads
- + Hardware
- + Remote maintenance
- + S7
- + Internet
- + TeleRouter

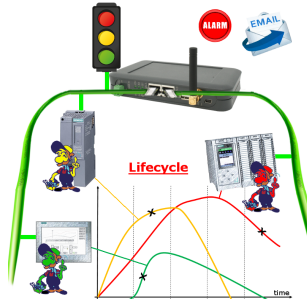


QR-Code Website:



Please make sure to update your drivers before using our products.

Profinet life cycle monitoring

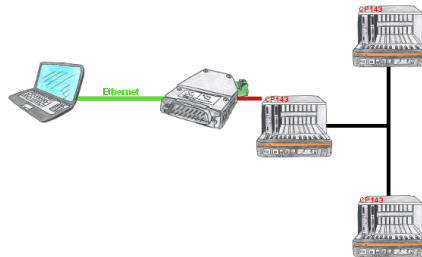


Identify impending failures in your Profinet.
Creeping aging will be displayed to you very detailed.
The Profinet-Watchdog give you the change to react before something happens.

Wireless around the Mitsubishi-PLC

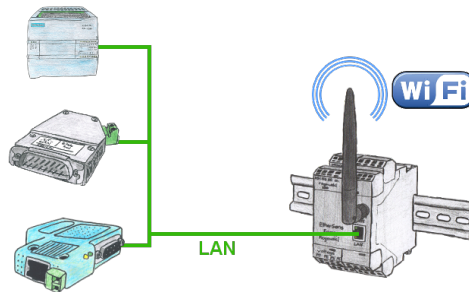


Move wirelessly around the Mitsubishi-PLC and communicate for example ONLINE in the status



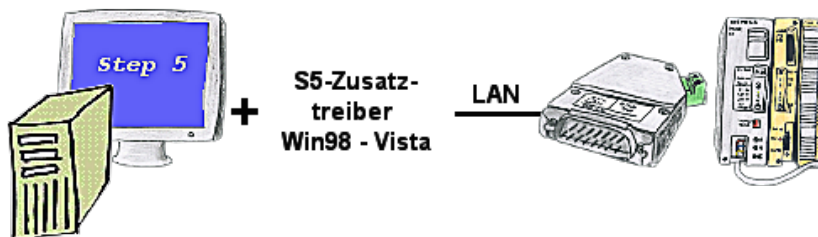
With the S5-H1-PG-LAN you would be able to use the H1-path-selection over the S5-LAN++ and communicate with all PLCs in the H1-bus. You don't have to connect serial to the CP, you can do this easily over your network.

LAN-subscriber to the WiFi



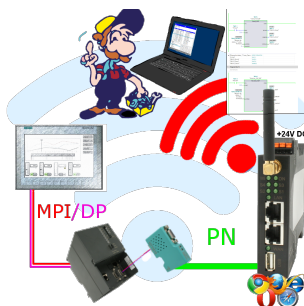
You also need to network devices but don't have locally no ethernet-cable. Wifi is available? With the EtherSens-Bridge you bring immediately all connected wired participants in the WLAN network.

Communication with Win98 – XP/Vista/7/8/10/11 via network to S5-PLC



You still have a PC with Win98 and a MS-DOS-based Step5-package and would like to go Online on your S5-PLC via LAN? No problem, the provided virtual Com-Port PLCVCom emulates a COM-port on your PC with which you go Online. Even your MS-DOS-based Step5-software on this WIN98-PC can use this virtual Com-Port. With a patchtool for the Siemens Step5-software, which is provided as well, nothing else stands in your way to communicate via LAN.

Wireless around the S7-PLC



Move wirelessly around the S7-PLC and communicate for example ONLINE in the status