

Under the web-address <https://www.process-informatik.de> are product specific documentations or software-driver/-tools available to download.

If you have questions or suggestions about the product, please don't hesitate to contact us.

Process-Informatik Entwicklungsgesellschaft mbH

Im Gewerbegebiet 1

DE-73116 Wäschenbeuren

+49 (0) 7172-92666-0

info@process-informatik.de

<https://www.process-informatik.de>

Menutree Website:

- + Products / docu / downloads
- + Accessories
 - + Connection cable / adapter
 - + Ethernet
 - + Cross-cable

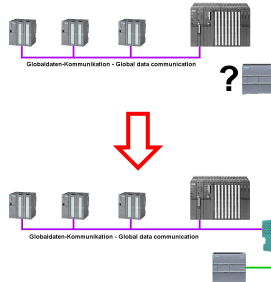


QR-Code Website:



Please make sure to update your drivers before using our products.

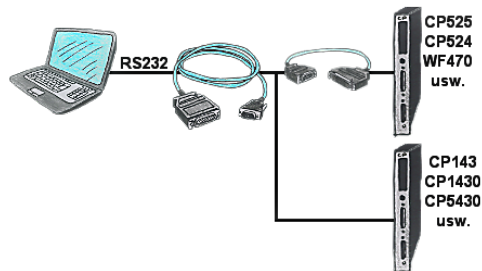
Global data communication (MPI) also with network-PLC



Running global-data-communication between MPI-PLCs (S7-300/400), is one of these PLCs replaced with a newer PLC with network-interface (S7-1200/1500), this PLC was not able to access this data.

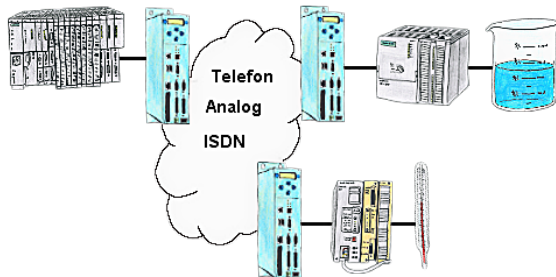
Simply configure the global-data of the “old” PLC via the web-server in the S7-LAN-module. Enter the new PLC as a TCP/IP-connection-partner and the module writes/reads the data via PUT/GET from this network-PLC and passes it on as before.

Serial communication with CP and more S5-assemblies



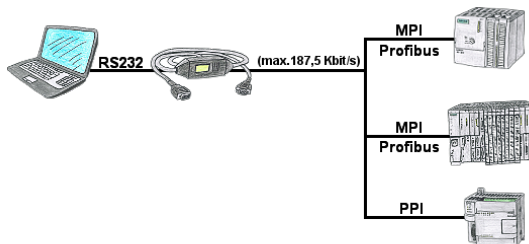
You have a PC with programming software and a 9pin COM-port as interface? No problem, for this purpose the PG-UNI-cable is exactly the right product. Connect it to a Siemens assembly such as H1-CP (CP1430), WF470 and PC or CP-525 with the CP525-adaptor and PC and you're Online.

PLC coupling (data exchange between PLCs)



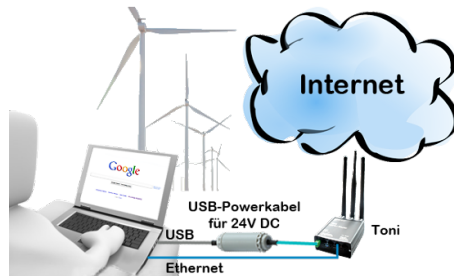
Your pumping stations report the water levels of the central control via telephone network. The central office itself can of course transmit commands/messages to the substations as well. Thereto no dedicated line is required, a "normal" telephone connection is sufficient because the devices cut the line after occurred message.

Serial programming of the S7- PLC

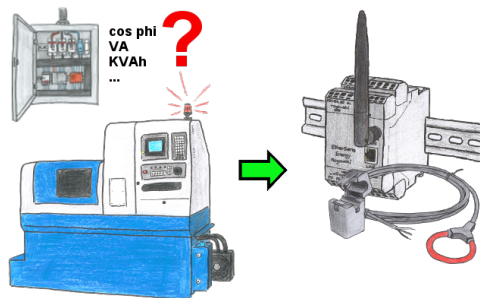


With the MPI/PPI-cable you have the ability to access a connected SPC-PLC S7-200 (PPI 9600 Baud and 19200 Baud) as well as S7-300/400 (MPI/Profibus 9600 Baud up to 187500 Baud) via PC serial with up to 115200 Baud for reading respectively writing of data.

Complete supply from the PC



Energy-data acquisition



Do you also need the energy-consumption of your plant or need to determine the $\cos \phi$?
With the EtherSens Energy you can capture and record by using a Rogowski-coil or folding-core the required values.