

Under the web-address <https://www.process-informatik.de> are product specific documentations or software-driver/-tools available to download.

If you have questions or suggestions about the product, please don't hesitate to contact us.

Process-Informatik Entwicklungsgesellschaft mbH

Im Gewerbegebiet 1

DE-73116 Wäschenbeuren

+49 (0) 7172-92666-0

info@process-informatik.de

<https://www.process-informatik.de>

Menutree Website:

- + Products / docu / downloads
- + Accessories
 - + Connector plug / equipment
 - + Option CheapConn for MPI cables



QR-Code Website:



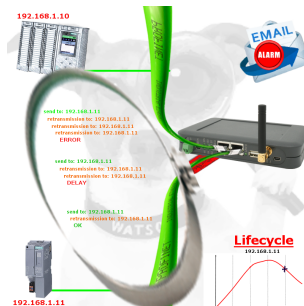
Please make sure to update your drivers before using our products.

Remote-maintenance Beckhoff-PLC with firewall



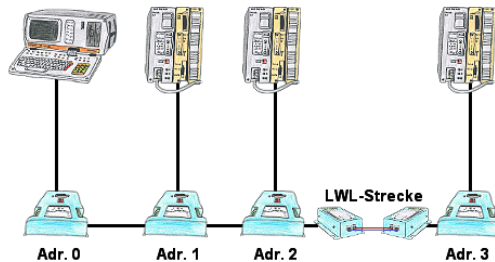
Remote-maintenance of a Beckhoff-controller with network-connection via secure VPN-tunnel and scalable firewall

Profinet life cycle monitoring and alarming



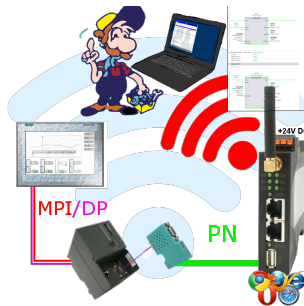
Identify impending failures in your Profinet.
Creeping aging will be displayed to you very detailed.
The Profinet-Watchdog give you the change to react before something happens.

Longer distances for L1-Bus



You need for your L1-Bus higher distance like the possible 1200m? You have strong disturbance on your L1-Bus? You need a serial line for higher distances and this galvanic decoupled? No problem, all this points are solved through the LWL-adapter. They are available for artificial and optical fibre, for L1-Bus and RS232.

Wireless around the S7-PLC



Move wirelessly around the S7-PLC and communicate for example ONLINE in the status

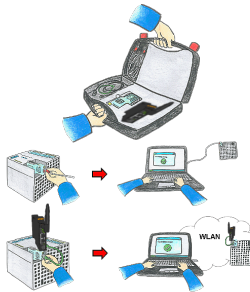
Use on-site without PC-adapter?



With the TeleService-device you can connect serial or by USB-cable to your PC/laptop and then communicate directly with the control without a PC-adapter or other S7-programming cables.

The USB-cable is a standard-cable just as the one you use at your printer.

Universally on/around machine and PLC



Communication with S5/S7-PLC (mainly), whether wired or via WIFI?

Universally armed for all requirements with the WIFI-sets, regardless of whether it is an S7-PLC, S5-PLC or a controller from another manufacturer with a LAN connection, having everything with you, depending on the used set, is your advantage.

- * S5-LAN++ or S5-BRIDGE for S5-PLC
- * S7-LAN or S7-BRIDGE for S7-PLC (PPI/MPI/Profibus)
- * ALF-UA as a pure converter from Ethernet to WIFI
- * Patch-cable or Cross-cable in order to act also wired

With the WIFI-Set you simply have everything with you in a handy case, be prepared for everything.

This makes (on site) work a pleasure.