

Under the web-address <https://www.process-informatik.de> are product specific documentations or software-driver/-tools available to download.  
If you have questions or suggestions about the product, please don't hesitate to contact us.

Process-Informatik Entwicklungsgesellschaft mbH

Im Gewerbegebiet 1

DE-73116 Wäschenbeuren

+49 (0) 7172-92666-0

[info@process-informatik.de](mailto:info@process-informatik.de)

<https://www.process-informatik.de>

**Menutree Website:**

- + Products / docu / downloads
- + Accessories
  - + Connection cable / adapter
  - + RS232
  - + Null-modem-cable

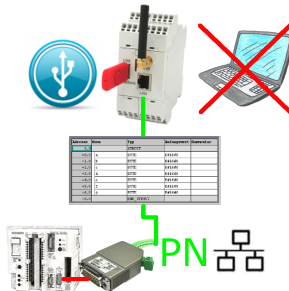


**QR-Code Website:**



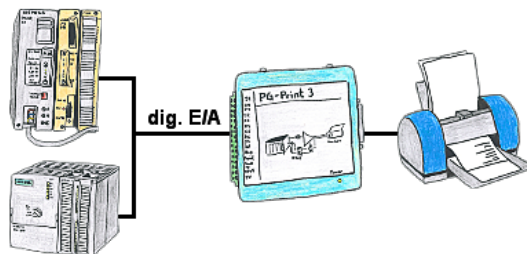
Please make sure to update your drivers before using our products.

## Data backup S5-PLC on USB-stick



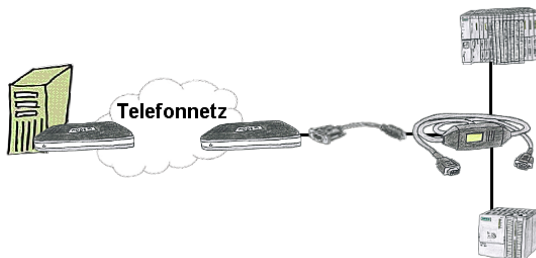
S5-PLC triggered DB-backup/-restore without additional PC via PG-socket and Ethernet on USB-stick

## Direct printing from the PLC via dig. I/O



You need production data, circulation lists of your PLC's, but don't want to use a CP or don't get a serial printer anymore? No problem, you need 8 digital outputs and 3 digital inputs of the PLC, and if you connect the PG-Print at it you can generate these lists with a EPSON- or HP-compatible parallel printer.

## Remote maintenance with TS-software without original TS-adaptor



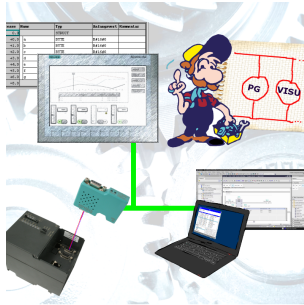
You have to reach urgent your PLC via remote maintenance and have no TS-adaptor in your company? No problem, configure with the MPI-Kabelmanager your S7-interface-cable MPI/PPI-Kabel the mode "TS" for "remote maintenance", connect this cable with the TS-Adapter (article number 9350-TS) with a standard modem and send it all to your client. Now you will be able to start the connection with your TS-software and solve the problem. And this all without buying a original TS-adaptor.

## Remote-maintenance Siemens-S5-PLC



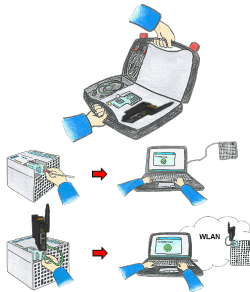
Remote-maintenance of a Siemens-S5-controller with S5-LAN++ on PD-port via secure VPN-tunnel of the TeleRouter

## Connect MPI / Profibus with current network panels



Visualize with the latest S7 network panels directly on your MPI Profibus.  
No PLC change necessary.  
Connect several nodes at the same time via a network module.  
Simultaneous access from different systems possible.

## Universally on/around machine and PLC



Communication with S5/S7-PLC (mainly), whether wired or via WIFI?

Universally armed for all requirements with the WIFI-sets, regardless of whether it is an S7-PLC, S5-PLC or a controller from another manufacturer with a LAN connection, having everything with you, depending on the used set, is your advantage.

- \* S5-LAN++ or S5-BRIDGE for S5-PLC
- \* S7-LAN or S7-BRIDGE for S7-PLC (PPI/MPI/Profibus)
- \* ALF-UA as a pure converter from Ethernet to WIFI
- \* Patch-cable or Cross-cable in order to act also wired

With the WIFI-Set you simply have everything with you in a handy case, be prepared for everything.

This makes (on site) work a pleasure.