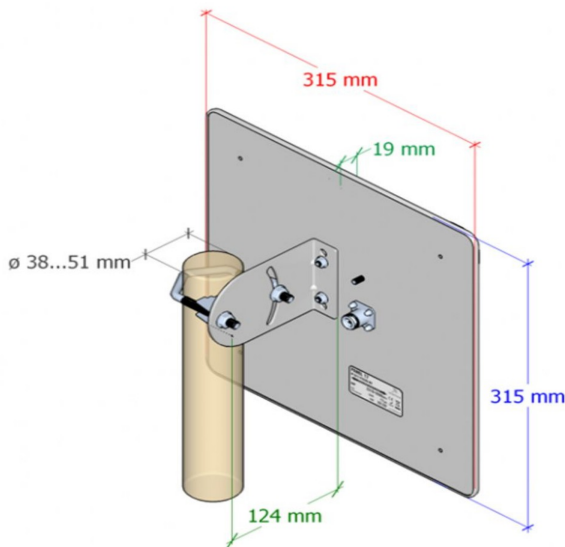


Assembly instructions Beam-antenna for ALF

Fundamental:

This antenna is a beam-antenne designed for the 2.4 GHz WLAN frequency band with a performance gain of 17dbi. Through the rich performance gain and the strong signal bundling, very high distances can be bridged. The assembly takes place on a rod with diameter 38 - 51mm. The antenna cable must be tightly screwed after assembly, mounting the two antennas in direct alignment to each other.

Installation:



Attention: No liability for performance or durability problems, losses are taken over if the assembly was not carried out according to this manual.

Under the web-address <https://www.process-informatik.de> are product specific documentations or software-driver/-tools available to download.
If you have questions or suggestions about the product, please don't hesitate to contact us.

Process-Informatik Entwicklungsgesellschaft mbH

Im Gewerbegebiet 1

DE-73116 Wäschenbeuren

+49 (0) 7172-92666-0

info@process-informatik.de

<https://www.process-informatik.de>

Copyright by PI - 2024

Menutree Website:

- + Products / docu / downloads
- + Accessories
 - + Antennas / Accessories
 - + Beam antenna for ALF

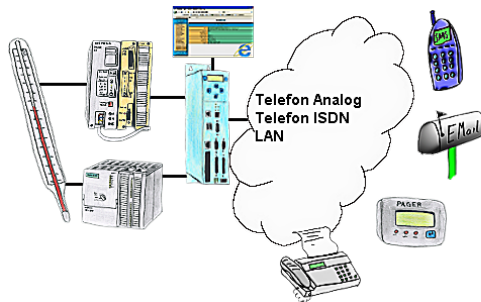


QR-Code Website:



Please make sure to update your drivers before using our products.

Failure report transmission without any change in the PLC programm



Your outstation reports the current value cyclically, or in case of malfunction the status via FAX, as SMS to your mobile phone, to your pager or also via e-mail. And this without an intervention of the PLC-program. Here the variables and actions are stored and processed in the TP-II.

Detect Profinet burglary



Detection and logging of unauthorized access in the defined Profinet

Attempted break-ins and access to the network are recognized immediately and e.g. reported by email

Logging of all accesses in the network for historical processing

Possible data-storage USB-stick or FTP-server via USB-network-stick.

Detect failure of Profinet-devices



Identify devices that are likely to fail in the near future.
Detect defective devices that no longer respond to PN protocols.
Defective devices are reported by email and logged.
No long troubleshooting thanks to exact station information.

S7-PLC over LAN



Communication with S7-PLC via Ethernet, just how and with what?

Data-communication with S7-PLC from PC or other devices via network, which interface is required. Questions you don't have to worry about. With "S7 over LAN" you get the right interface-products for PPI, MPI and Profibus.

Which one you use then is up to you.