

Under the web-address <https://www.process-informatik.de> are product specific documentations or software-driver/-tools available to download.

If you have questions or suggestions about the product, please don't hesitate to contact us.

Process-Informatik Entwicklungsgesellschaft mbH

Im Gewerbegebiet 1

DE-73116 Wäschenbeuren

+49 (0) 7172-92666-0

info@process-informatik.de

<https://www.process-informatik.de>

Menutree Website:

+ Products / docu / downloads

+ Hardware

+ Web-Visualization

+ S7-VISU

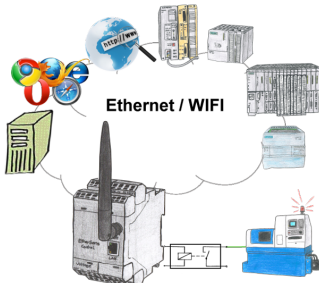


QR-Code Website:



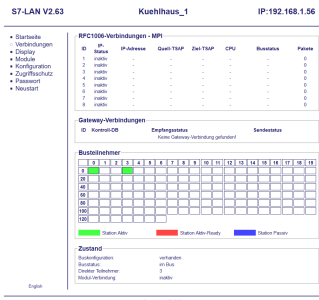
Please make sure to update your drivers before using our products.

Relaycontacts 230VAC/16A directly over WIFI/LAN



Switch with the EtherSens Control with relay-output easily and directly over LAN or WIFI up to 230VAC/16A, switchable over web-browser, TCP/IP-protocol or PLC-controlled. At the same time you monitor the switching-states on the optional SD-card or on the FTP server.

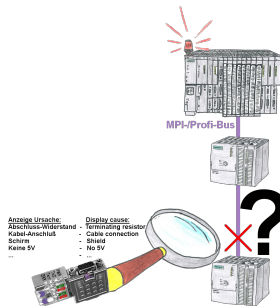
Informations about the bus



View information from the connected bus-system in plain text without using the Simatic-Manager or TIA-Portal. With the connection-menu you get the list of reachable nodes, marked in color whether it is an "active bus-participant", is a "candidate for inclusion in the bus" or a "passive bus-participant".

You can also see whether cyclic bus-parameter-protocols have been received, you are "in the bus" yourself, the bus-address of the participant recognized as a "direct participant" (on which the S7-LAN is located) and whether the contained modules such as "variable control", "gateway-coupling",... actively communicate.

Bus-connector with diagnostic function



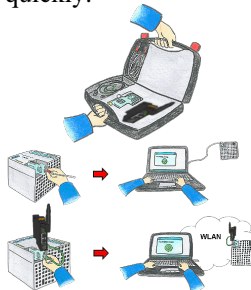
Bus problems and no reason apparent?

Connect the diagnostic-bus-connector to the "suspicious" PLC and read the possible cause of the fault using the blink-code:

- 5V voltage missing/out of specification
- possible short-circuit in the bus
- No bus-activity on the PLC
- Wrong termination
- Bus is open

...

The bus-connectors of the "DiagConn"-series indicate all of these possible causes of the malfunction. The bus-connector is available in 90°, 45° and 0°-versions. The connectors can be attached instead of the "normal" bus-connectors. There does not have to be a fault, the plugs can generally also be used in the bus and you can later find the cause of any possible failures more easily and quickly.



Communication with S5/S7-PLC (mainly), whether wired or via WIFI?

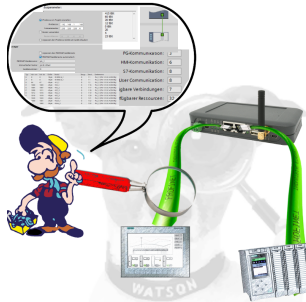
Universally armed for all requirements with the WIFI-sets, regardless of whether it is an S7-PLC, S5-PLC or a controller from another manufacturer with a LAN connection, having everything with you, depending on the used set, is your advantage.

- * S5-LAN++ or S5-BRIDGE for S5-PLC
- * S7-LAN or S7-BRIDGE for S7-PLC (PPI/MPI/Profibus)
- * ALF-UA as a pure converter from Ethernet to WIFI
- * Patch-cable or Cross-cable in order to act also wired

With the WIFI-Set you simply have everything with you in a handy case, be prepared for everything.

This makes (on site) work a pleasure.

Profinet-Member-Analysis



Exact analysis of your Profinet members.
Addresses, configurations and other data can be recorded directly.
See immediately possible conflicts due to the configuration.

Serial communication with S5-PLC (CPU-assemblies 15pin)



S5-PLC communication from PC with serial COM-port and your programming package?

PG-Com-cable up to a length of 15m are the appropriate interface-product. Without special accessories, without external supply, plugged on PC and S5 PLC and work immediately. Connection with original Siemens-sliding-locking to S5-PLC, with screw-bolts on the PC. Function with S5-90U to S5-155U. Connection PLC-side 15pin, PC 9pin (adaptation to 25pin at any time possible).