

Under the web-address <https://www.process-informatik.de> are product specific documentations or software-driver/-tools available to download.
If you have questions or suggestions about the product, please don't hesitate to contact us.

Process-Informatik Entwicklungsgesellschaft mbH

Im Gewerbegebiet 1

DE-73116 Wäschenbeuren

+49 (0) 7172-92666-0

info@process-informatik.de

<https://www.process-informatik.de>

Menutree Website:

- + Products / docu / downloads
- + Hardware
 - + Memory modules / Prommer
 - + FLASH-PROMMER-II

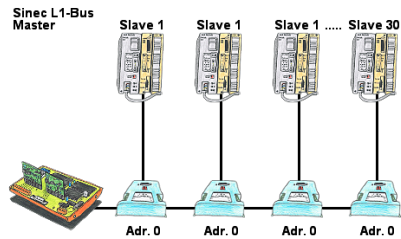


QR-Code Website:



Please make sure to update your drivers before using our products.

Sinec-L1-bus without master (CP530)



You have a running Sinec-L1-bus and your master the CP530 is defective or rather broke down and the bus has to continue running? No problem, connect the L1-controller to the according bus-modules instead of the CP530, define the circulation list of the clients and the L1-bus continues running immediately.

Wireless around the Pilz-PLC



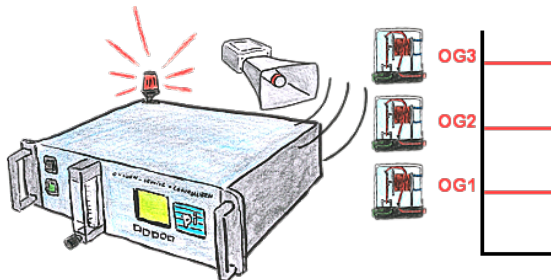
Move wirelessly around the Pilz-PLC and communicate for example ONLINE in the status

Detect and alarm Profinet burglary

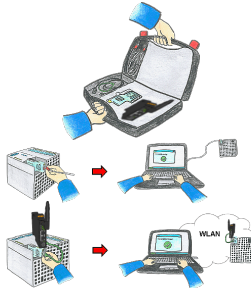


Recognize cable breakage, contact problems and line faults.
Retransmissions and failures are logged and reported.
Early acting before total failure of the participant.

Free definable limits



You need some limits? No problem, with the OSC-II-devices you will be able to define 3 relay outputs (toggle switch) like UG (down level) or OG (top level) or as a ready-flag (internal probe has working temperature).



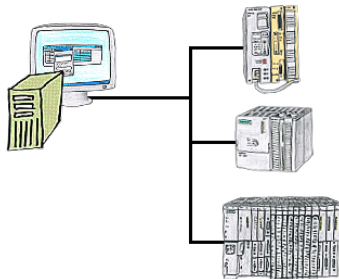
Communication with S5/S7-PLC (mainly), whether wired or via WIFI?

Universally armed for all requirements with the WIFI-sets, regardless of whether it is an S7-PLC, S5-PLC or a controller from another manufacturer with a LAN connection, having everything with you, depending on the used set, is your advantage.

- * S5-LAN++ or S5-BRIDGE for S5-PLC
- * S7-LAN or S7-BRIDGE for S7-PLC (PPI/MPI/Profibus)
- * ALF-UA as a pure converter from Ethernet to WIFI
- * Patch-cable or Cross-cable in order to act also wired

With the WIFI-Set you simply have everything with you in a handy case, be prepared for everything.

Project/history-administration of PLC-programming
This makes (on-site-) work a pleasure.



Who doesn't know this? When accessing the PLC you find out that parts of the program flow has been changed and none of the colleagues/employees are responsible for it? Therefore install the "option controller" for the PG-2000-software, and every activity of the employees working with the program will be recorded. So you can identify the one employee very quickly and changes are ex post comprehensible, too.