

Under the web-address <https://www.process-informatik.de> are product specific documentations or software-driver/-tools available to download.  
If you have questions or suggestions about the product, please don't hesitate to contact us.

Process-Informatik Entwicklungsgesellschaft mbH

Im Gewerbegebiet 1

DE-73116 Wäschenbeuren

+49 (0) 7172-92666-0

[info@process-informatik.de](mailto:info@process-informatik.de)

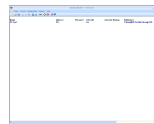
<https://www.process-informatik.de>

**Menutree Website:**

- + Products / docu / downloads
- + Software
  - + PLC-software-tools
  - + PLC – Data safety
  - + Windows



**QR-Code Website:**



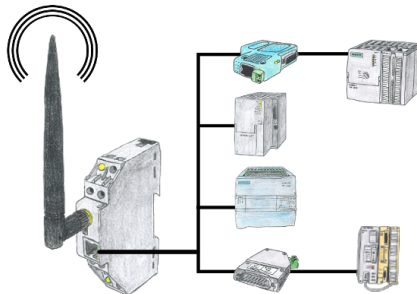
Please make sure to update your drivers before using our products.

## Without LAN-cable round of the PLC



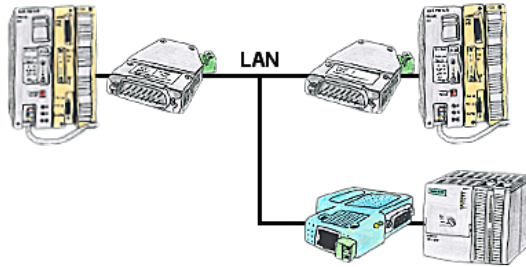
You're right in the middle of your production line and should move around the machine and simultaneously observe / manage. No problem, you parameterize the S7-WLAN-Bridge, connect to the MPI-LAN and connect to an access-point or with the ad-hoc-network of your laptop and are ONLINE on the PLC.

## Universal transfer of LAN-products into WLAN



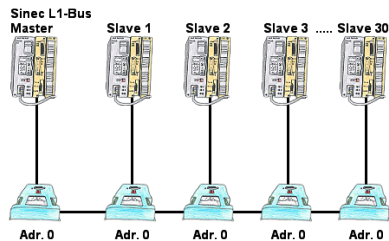
You have a variety of LAN products and would like to communicate to them via WLAN? No problem, with the WLAN-Klemme you will be able to contact all these products.

## PLC coupling (data exchange between PLC's)



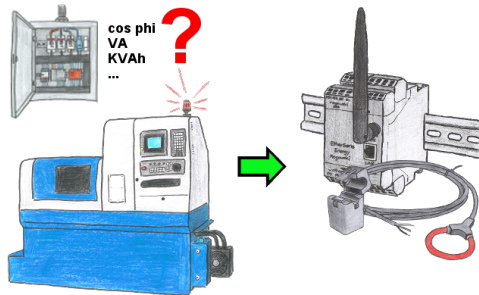
Your pumping stations report the water levels of the central control via telephone network. The central office itself can of course transmit commands/messages to the substations as well. Therefore no dedicated line is required, it's sufficient when the stations connect via network (DSL-router).

## Sinec-L1-bus configuration without BT-777-terminal



You have to configure a Sinec-L1-bus, own the master, but there's no BT-777-busterminal to buy? No problem, connect the IBX-Klemme to every S5-PLC that is in the run via the optional IBX-SPS-cable, supply every IBX-Klemme with ext. 24V DC if the PLC is not able to provide it, set-up the address 0 and define the actual L1-bus-address in the PLC. Now your master can communicate with the slave-assemblies.

## Energy-data acquisition



Do you also need the energy-consumption of your plant or need to determine the cos phi?  
With the EtherSens Energy you can capture and record by using a Rogowski-coil or folding-core the required values.

## Profinet-monitoring/-diagnosis inclusive alarm-messages



Detect intrusions and anomalies on your ProfiNet.  
Early detection of malfunction and failures and malfunctions.  
Easy installation, plug and play double socket.