

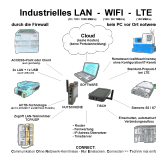
Under the web-address <https://www.process-informatik.de> are product specific documentations or software-driver/-tools available to download.
If you have questions or suggestions about the product, please don't hesitate to contact us.

Process-Informatik Entwicklungsgesellschaft mbH
Im Gewerbegebiet 1
DE-73116 Wäschenbeuren
+49 (0) 7172-92666-0
info@process-informatik.de
<https://www.process-informatik.de>

Menutree Website:

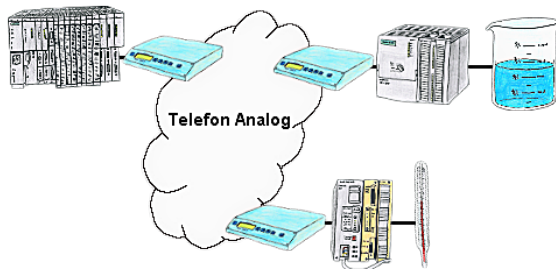
- + Products / docu / downloads
- + Hardware
- + Remote maintenance
- + S5
- + Internet
- + CONNECT devices

QR-Code Website:



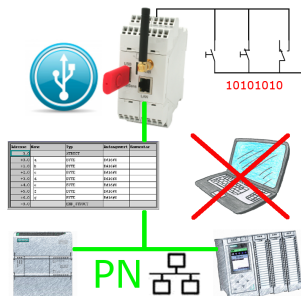
Please make sure to update your drivers before using our products.

PLC-coupling (data exchange between PLC-devices)



Your pumping stations report the water levels of the central control via telephone network. The central office itself can of course transmit commands/messages to the substations as well. Thereto no dedicated line is required, a "normal" telephone connection is sufficient because the devices hangs up the line after occurred message.

DB-Backup/Restore S7-PLC PN-port on USB-stick via dig. IO



Via digital input triggered DB-backup/-restore without additional PC via PN-port to USB-stick

S5-PLC over LAN

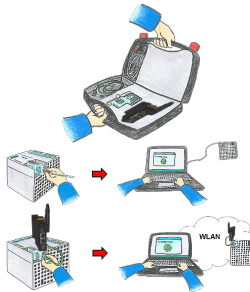


Communication with S5-PLC via Ethernet, just how and with what?

Data-communication with S5-PLC from PC or other devices via network, which interface is required. Questions you don't have to worry about. With "S5 over LAN" you get the right interface-products for your interface of the PLC.

Which one you use then is up to you.

Universally on/around machine and PLC



Communication with S5/S7-PLC (mainly), whether wired or via WIFI?

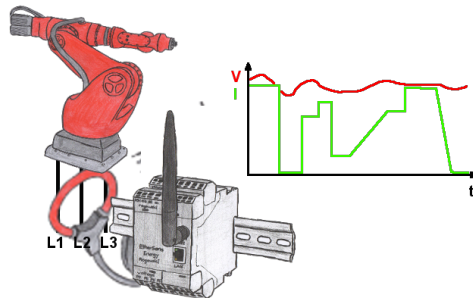
Universally armed for all requirements with the WIFI-sets, regardless of whether it is an S7-PLC, S5-PLC or a controller from another manufacturer with a LAN connection, having everything with you, depending on the used set, is your advantage.

- * S5-LAN++ or S5-BRIDGE for S5-PLC
- * S7-LAN or S7-BRIDGE for S7-PLC (PPI/MPI/Profibus)
- * ALF-UA as a pure converter from Ethernet to WIFI
- * Patch-cable or Cross-cable in order to act also wired

With the WIFI-Set you simply have everything with you in a handy case, be prepared for everything.

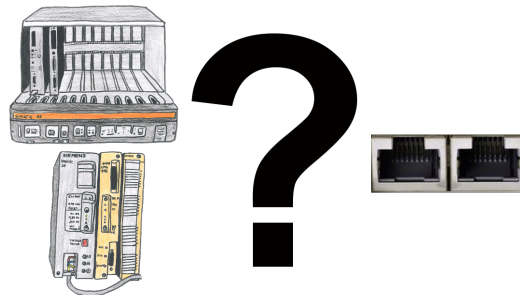
This makes (on site) work a pleasure.

Detect unnecessary idling



Detect the efficiency of your plant/machine by EtherSens-Energy-devices. Log the preset parameters and evaluate them then later. Find so unnecessary idle-times and increase so the efficiency.

Turbo-LAN-interface for the S5



S5-115U/135U/150U/155U and need further processing of data via network and PG interface too slow?

Plug the "S5-TCPIP 100" interface-card into a free slot in the rack, integrate the card into the S5 and nothing stands in the way of communication. Access the controller-data "parallel" to the PG-interface with "Power", regardless of whether it is "TCP/IP" or "ISO on TCP (RFC1006)", "ISO (H1)", "Modbus on TCP" or "SPS header", the interface-card reacts to the various protocols according to your configuration and returns the required data.

With the integrated 4-way-switch, several LAN-participants can be connected to the card and thus to the controller.