

## Handling short instructions for

### ***TINA*** ***Din-rail mounting / table-device***



#### **power supply:**

If you want to use the device you have to supply power to it first.

The device can be powered with 24V via the included phoenix connector (*attention: polarity must be respected*).

#### **access to the web interface:**

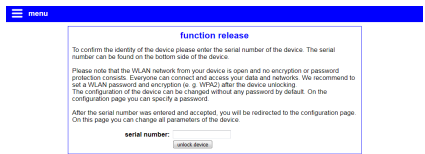
After you have supplied power to your device you have the ability to access the web interface of the device.

The **TINA** device provides an own WLAN network via its integrated WLAN interface. The WLAN network has the name „TINA WiFi“. This network is not encrypted, so you can connect to it easily without entering a password or something else.

If you are connected with the WLAN network of the **TINA** device your computer or smart phone gets an IP address automatically via DHCP. If your computer / smart phone is not configured for DHCP you can either configure your network card to use an IP address between 192.168.1.2 and 192.168.1.254 or activate DHCP on it.

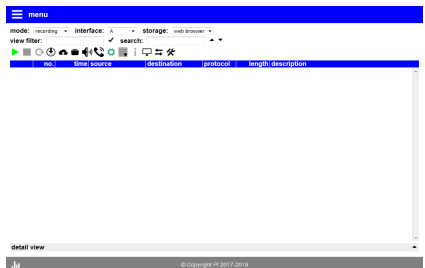
If your computer doesn't have a WLAN interface or if you don't want to use it you can still access the **TINA** device through the LAN-A interface. On this interface no DHCP server is running, which means that you have to configure the IP address of your computer manually. Therefore you just have to assign an IP address from the range of 192.168.2.2 to 192.168.2.254 to your PC's network card.

Now you can open an internet browser (e. g. Mozilla Firefox) and enter the IP address 192.168.1.1 (for WLAN) or 192.168.2.1 (for LAN-A) in the address line. Next you should see the web interface of the **TINA** device with a hint window and an input field (see picture on the right side). On this page you have to enter the serial number of the device, which can be found on the bottom of the device.



After you have entered the serial number the device is unlocked and can be used normally. To be able to customize the configuration directly, you will be redirected to the configuration page (see picture on the left) after entering the serial number. We recommend that you check and maybe customize the configuration.

As soon as you have saved the configuration via the “submit configuration” button on the configuration page, your browser will redirect you to the start page of the device (see picture on the right).



## Analyzing the network traffic:

The **TINA** device has the ability to analyze the network traffic between two or more LAN subscribers. First you have to connect the first subscriber with a LAN cable to the interface A of the **TINA** device. Next you can connect the second subscriber with another cable to the interface B. If you have more than two subscribers you can connect a switch or hub to one or both interface(s).

For analyzing and controlling the network traffic you have several pages on the web interface: “overview”, “network scan”, “network tools” and “DHCP clients”

An detailed description as well as an explanation of the single web pages can be found in the manual of this device. The user manual can be found on the product page of our web page under the download section *Documentation* → *Handbook TINA*.

Under the web-address <https://www.process-informatik.de> are product specific documentations or software-driver/-tools available to download.  
If you have questions or suggestions about the product, please don't hesitate to contact us.

Process-Informatik Entwicklungsgesellschaft mbH

Im Gewerbegebiet 1

DE-73116 Wäschenbeuren

+49 (0) 7172-92666-0

[info@process-informatik.de](mailto:info@process-informatik.de)

<https://www.process-informatik.de>

Copyright by PI 2025

**Menutree Website:**

- + Products / docu / downloads
- + Hardware
  - + Analysis technic
  - + TINA Din-rail

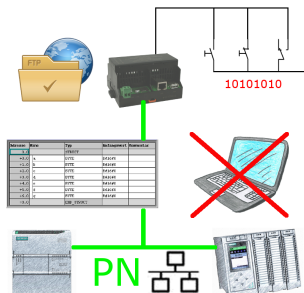


**QR-Code Website:**



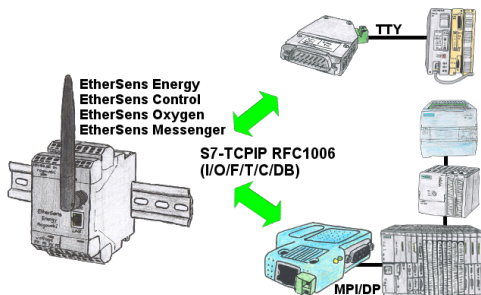
Please make sure to update your drivers before using our products.

## Data backup S7-PLC PN-port on FTP-server via dig. IO



Via digital input triggered DB-backup/-restore without additional PC via PN-port to FTP-server

## PLC coupling S5 and S7



Data-processing/-recording of PLC-data?

Data-logging of recorded process-values in a DB writing or read out in the connected PLC via network, thanks to RFC1006-communication in the devices is nothing in the way.

Even accesses to flags (individual bits of the words) are possible at any time. Configure the data via the integrated web-server that gets target-PLC or returns the necessary-data.

If the PLC does not have an Ethernet-port, with optional adapters, enable this communication:

\* S5 over S5-LAN++

\* S7-PPI/MPI/Profibus over S7-LAN