

Under the web-address <https://www.process-informatik.de> are product specific documentations or software-driver/-tools available to download.
If you have questions or suggestions about the product, please don't hesitate to contact us.

Process-Informatik Entwicklungsgesellschaft mbH

Im Gewerbegebiet 1

DE-73116 Wäschenbeuren

+49 (0) 7172-92666-0

info@process-informatik.de

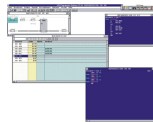
<https://www.process-informatik.de>

Menutree Website:

- + Products / docu / downloads
- + Software
 - + Programming-software PG-2000 Step5 & Step7
 - + Complete package



QR-Code Website:



Please make sure to update your drivers before using our products.

Sensor-networking 4.0

Siemens S5
Read / Write
PG-Schnittstelle

Siemens S7
Read / Write
MPI / MPI / DP

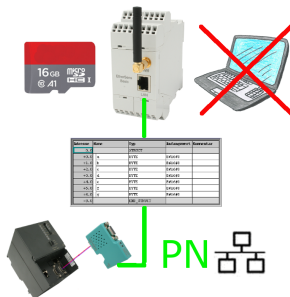
EtherSens
Analog IN / OUT
Digital IN / OUT

Energieanalyse
(EN 60475-1 EN 60475-3)
Echtzeit-Energie
L1, L2, L3, N-Echtzeitanalyse
bis 600 Messungen / Sek.
Spannungen bis 500 VAC
Strome über 1000 A
Hz / cos phi / Leistungsfaktor
WWh / Blind- / Scheinleistung kW
Energieverbrauch kWh

Alle Messgrößen
U / I / CG / O2 / H2O, m, kg, mm ...
dezentrale Analyse, Überwachen, Alarmieren
zentral protokollieren + beobachten

Vorhandene Sensoren direkt einbinden
analoge und digitale Ein-/Ausgänge
elektrisch und Messwerte frei konfigurieren
Messgrößen einfach über WEB abfragen
Klick-Montage auf Standard-Hutschene
Stromversorgung 230VAC / 24VDC
Integrierter Webserver
Zugriff auf alle Sensoren im Netz
Protokoll auf SD-Karte + FTP-Server
in verschiedenen Datenformaten
bei Grenzen E-Mail + Ausgänge über Netz

Data backup S7-PLC over MPI/Profibus on SD-card



S7-PLC triggered DB-backup/-restore without additional PC via MPI/Profibus on SD-card

Detect Profinet burglary



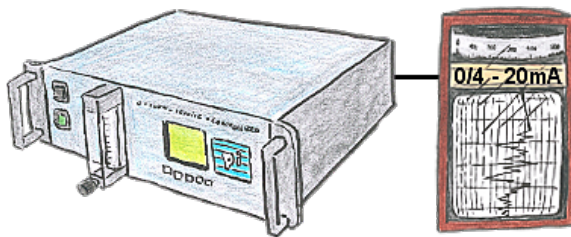
Detection and logging of unauthorized access in the defined Profinet

Attempted break-ins and access to the network are recognized immediately and e.g. reported by email

Logging of all accesses in the network for historical processing

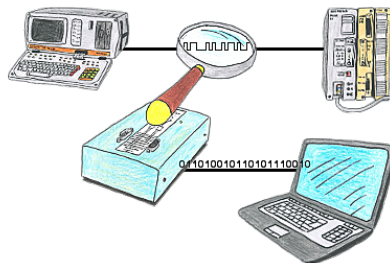
Possible data-storage USB-stick or FTP-server via USB-network-stick.

Documentation of oxygen concentration



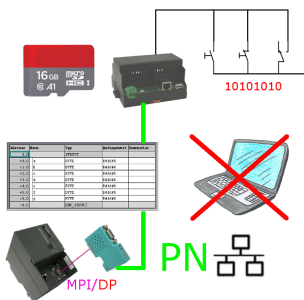
The integrated current output issues the actual concentration in the range of 0/4 - 20mA via free definable limits.

Logging and analysis of communication data



You want check, why your application cant communicate with the PLC or why after some time past the communication will be broken? No problem, integrate the PG-FOX-hardware in this communication way and log through the PG-FOX-software on an PC the sended data in the exact time. So, you can later check the date and find a solution of the problem.

Data backup S7-PLC over MPI/Profibus on SD-card via dig. IO



Via digital input triggered DB-backup/-restore without additional PC via MPI/Profibus to SD-card