

Under the web-address <https://www.process-informatik.de> are product specific documentations or software-driver/-tools available to download.

If you have questions or suggestions about the product, please don't hesitate to contact us.

Process-Informatik Entwicklungsgesellschaft mbH

Im Gewerbegebiet 1

DE-73116 Wäschenbeuren

+49 (0) 7172-92666-0

info@process-informatik.de

<https://www.process-informatik.de>

Menutree Website:

- + Products / docu / downloads
- + Accessories
 - + Connection cable / adapter
 - + Ethernet
 - + Patch cable

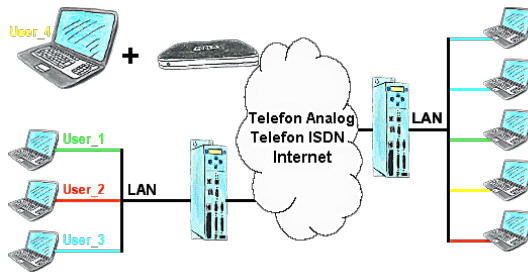


QR-Code Website:



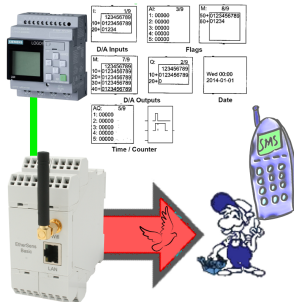
Please make sure to update your drivers before using our products.

User dependant network access



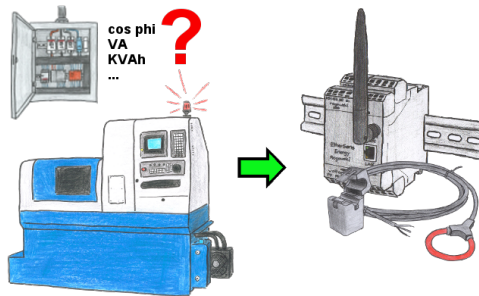
You have PLC/LAN-participants different supplier in your network and everybody should have access to this network? No problem, you give every supplier a VPN-username and password, define in the destination device a user-dependent network-access and after positiv login he only can communicate to the released ip-addresses.

SMS Email with LOGO!



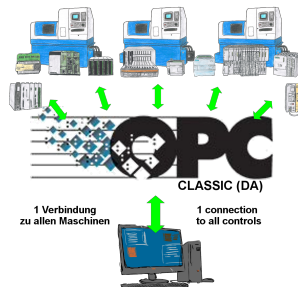
Send of all kinds of SMS-messages controlled by the LOGO!-Control

Energy-data acquisition



Do you also need the energy-consumption of your plant or need to determine the cos phi? With the EtherSens Energy you can capture and record by using a Rogowski-coil or folding-core the required values.

Machine-access regardless of the manufacturer



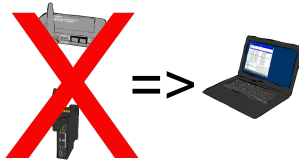
Machines from various manufacturers in the production-plant and with all of them should data be exchanged?

Before you get the machine-specific protocol from each manufacturer in order to integrate it into your application, there are easier ways to implement this requirement.

OPC-servers have many protocols from different manufacturers integrated and provide the collected data as "Server". Your application communicates as a "client" with the OPC-protocol DA (Classic) with the "Server" and thus receives the required data from all machines without knowing the respective protocol.

Access with one protocol and still have data from many manufacturers, that is OPC.

Remote-maintenance access independent of hardware



Why always take any additional hardware in the luggage for remote-access to your own systems and machines? Installing the Software-CONNECT on your PC you always have with it and access to your own CONNECT-cloud is always possible, no matter where you are.

Internet-access on the PC of course required.

S5-PLC over WLAN/WIFI



Communication with S5-PLC via WLAN/WIFI, just how and with what?

Data-communication with S5-PLC from PC or other devices via WLAN/WIFI, which interface is required. Questions you don't have to worry about. With "S5 over WLAN/WIFI" you get the right interface-products for your interface of the PLC.

Which one you use then is up to you.