

Under the web-address <https://www.process-informatik.de> are product specific documentations or software-driver/-tools available to download.
If you have questions or suggestions about the product, please don't hesitate to contact us.

Process-Informatik Entwicklungsgesellschaft mbH

Im Gewerbegebiet 1

DE-73116 Wäschenbeuren

+49 (0) 7172-92666-0

info@process-informatik.de

<https://www.process-informatik.de>

Menutree Website:

- + Products / docu / downloads
- + Accessories
- + Prolongation-Sets
- + PG-UNI lengthening set

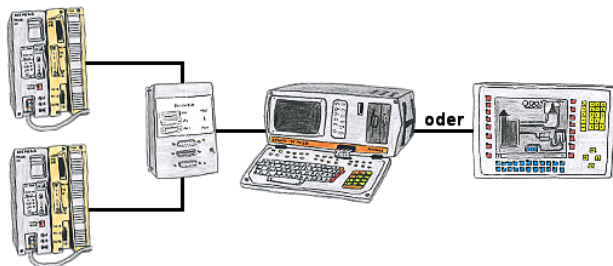


QR-Code Website:



Please make sure to update your drivers before using our products.

Interface-switch for PD/PC



You have to work with more PLC-devices, but no pleasure to switch on/off? No problem, you connect a device of the AG-Switch-family to the PLC-devices and your PD/PC and you will be able to communicate to both PLCs. The selection which PLC you make for AG-Switch-I via toggle switch and for the AG-Switch-II via 24V-controll input.

Universally on machine and PLC



Remote access to all your systems, PLCs without great effort. Even triggering of actions by setting the integrated digital-outputs or reading in the digital and analog-inputs is possible via the Internet connection.

Regardless of whether you use your PC with the CONNECT-software or have connected a device from the CONNECT-family. Couplings via LTE also enable access to the LAN-interface on the system side. No special SIM-card is required for this.

A solution with little effort and everything within your "private" cloud.

Remote maintenance / telecontrol of PLC



The access to the connected PLC with the Siemens TS-software or PG-2000 including TS-option results of coupling via Analogue-, ISDN- (only with AB-adaptor) as well as GSM-line.

Management of the data-areas

Datenbereich-Zugriffsschutz

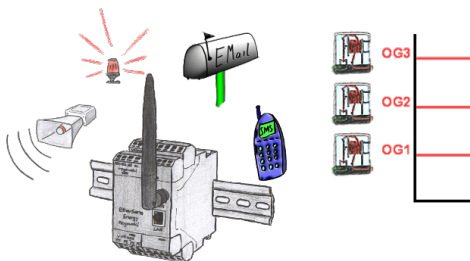
Schutzmodus: Hilfe anzeigen

CPU 2	#Bus-Teilnehmer 2
r:=M04	#Lesen M04
r:=M5	#Lesen M5
w:=M8	#Schreiben M8
CPU 6	#Bus-Teilnehmer 6
r:=M0,40	#Lesen 40 Merkerworte ab M0
w:=M80-90	#Schreiben M80 - M90
CPU 10	#Bus-Teilnehmer 10
r:=EW0,10	Lesen 10 Eingangsworte ab EW0

With the management of the data-areas it is determined whether the entered data-areas can be read/written via the module with the connected controllers. A central button for the function determines whether the specified inputs are "allowed" or "not allowed" are.

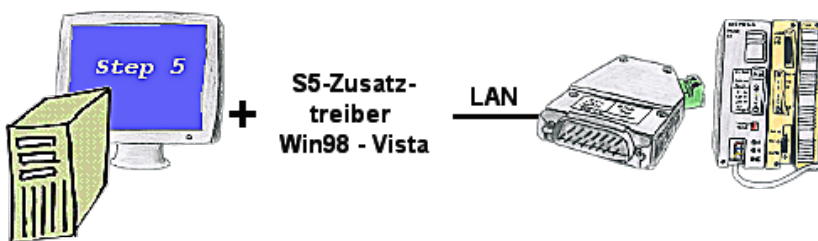
The input itself is kept very simple: "r" for reading and "w" for writing, a ":" as a separator and then the data-area in S7-format. If there is only one CPU on the bus, the CPU-address does not even have to be specified, the participant on which the module is plugged in is used.

Alarming



Dont log with EtherSens-device only the process-values, also monitor them simultaneously. Once a predetermined threshold is exceeded/not reached, the EtherSens-device indicates this.

Communication with Win98 – XP/Vista/7/8/10/11 via network to S5-PLC



You still have a PC with Win98 and a MS-DOS-based Step5-package and would like to go Online on your S5-PLC via LAN? No problem, the provided virtual Com-Port PLCVCom emulates a COM-port on your PC with which you go Online. Even your MS-DOS-based Step5-software on this WIN98-PC can use this virtual Com-Port. With a patchtool for the Siemens Step5-software, which is provided as well, nothing else stands in your way to communicate via LAN.