

Under the web-address <https://www.process-informatik.de> are product specific documentations or software-driver/-tools available to download.  
If you have questions or suggestions about the product, please don't hesitate to contact us.

Process-Informatik Entwicklungsgesellschaft mbH

Im Gewerbegebiet 1

DE-73116 Wäschenbeuren

+49 (0) 7172-92666-0

[info@process-informatik.de](mailto:info@process-informatik.de)

<https://www.process-informatik.de>

**Menutree Website:**

- + Products / docu / downloads
- + Accessories
- + Adapter for s5-interface
- + Monkey-swing

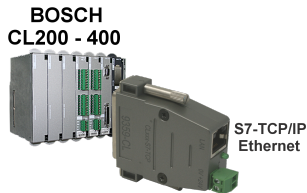


**QR-Code Website:**



Please make sure to update your drivers before using our products.

## BOSCH-CL <=> S7-TCPIP



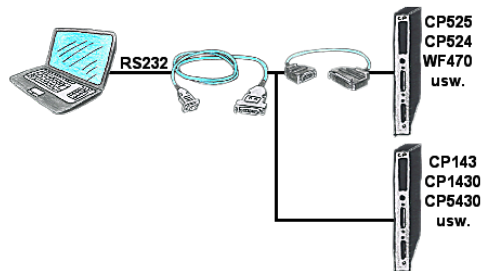
Bring your BOSCH-CL control CL200 - CL400 into the network

Link the PLC with your production-data-acquisition or other Industry 4.0-applications

Communicate with the controller as if you were talking to an S7-PLC, but the data comes from the CL-PLC

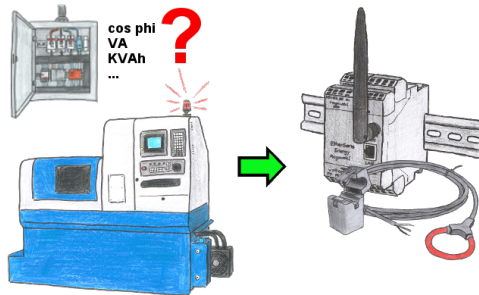
Networking CL-controllers without much effort (set the IP-address to match your subnet in the module, nothing more)

## Serial communication with CP and more S5-assemblies



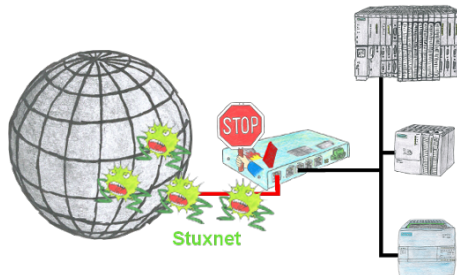
You have a PC with programming software and a 9pin COM-port as interface? No problem, for this purpose the PG-UNI-II-cable is exactly the right product. Connect it to a Siemens assembly such as H1-CP (CP1430), WF470 and PC or CP-525 with the CP525-adaptor and PC and you're Online.

## Energy-data acquisition



Do you also need the energy-consumption of your plant or need to determine the cos phi? With the EtherSens Energy you can capture and record by using a Rogowski-coil or folding-core the required values.

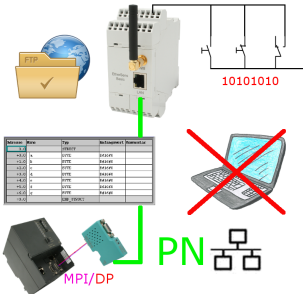
## Protection against virus attacks



Protection of your systems against virus-attacks such as "Stuxnet"

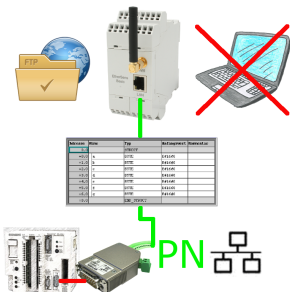
Switch the S7-Firewall or TeleRouter with the S7-firewall-option between the PLC(s)/machine-network and the company-network to prevent your system- and process-data from being destroyed.

Data backup S7-PLC over MPI/Profibus on FTP-server via dig. IO
--



Via digital input triggered DB-backup/-restore without additional PC via MPI/Profibus to FTP-server

Data backup S5-PLC on FTP-Server
----------------------------------



S5-PLC triggered DB-backup/-restore without additional PC via PG-socket and Ethernet on FTP-server