

Under the web-address <https://www.process-informatik.de> are product specific documentations or software-driver/-tools available to download.  
If you have questions or suggestions about the product, please don't hesitate to contact us.

Process-Informatik Entwicklungsgesellschaft mbH

Im Gewerbegebiet 1

DE-73116 Wäschenbeuren

+49 (0) 7172-92666-0

[info@process-informatik.de](mailto:info@process-informatik.de)

<https://www.process-informatik.de>

### **Menutree Website:**

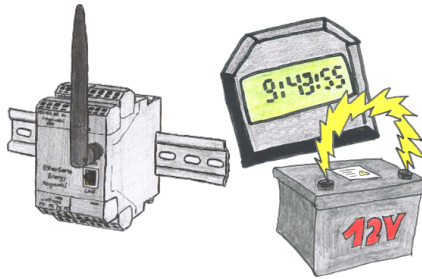
- + Products / docu / downloads
- + Accessories
  - + Various PLC-/Panel-connection-cable
  - + PG685 cable

### **QR-Code Website:**



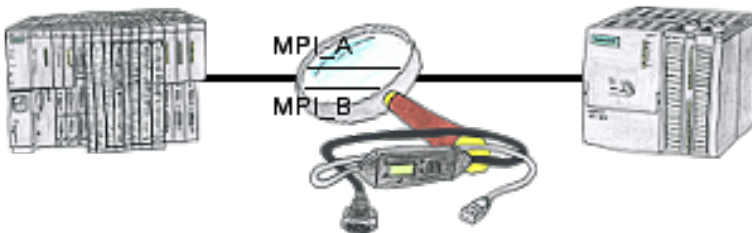
Please make sure to update your drivers before using our products.

## Battery buffered time



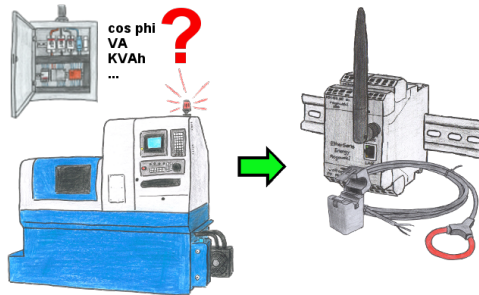
You always need a current time, but do not always have a time-server on site. With the integrated battery-backed RTC you always have the current time in the unit. Even if the power fails, the time in the unit continues to operate, so that when the voltage returns, the time continues to run correctly.

## Malfunctions on the Bus although everything is (apparently) connected properly?



The S7-LAN can also be used for controlling/checking the MPI/Profibus. It will be plugged on the Bus so that you can take a look at the status of the busses via software on PC, for example the numbers of parity errors.

## Energy-data acquisition

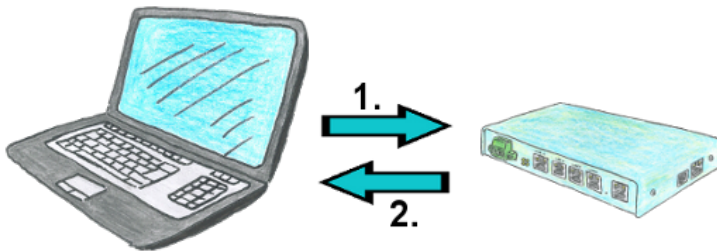


Do you also need the energy-consumption of your plant or need to determine the cos phi?  
With the EtherSens Energy you can capture and record by using a Rogowski-coil or folding-core the required values.

## Ethernet and WIFI coupling to the S5-PLC



## Saving of phone cost through call-back



You need a communication over the phone with your operation of facilities, but do not want to pay the phone bills? No problem, with the TELE-router you are able to work even with recall. This means that you first call the device and tell him that you want a call back. If the credentials are correct and the recall is permitted, the TELE-router connection is terminated and then it calls back the transferred number. Your customer shall bear the cost of the connection.

## Remote-maintenance Siemens-S7-PLC with MPI/Profibus



Remote-maintenance of a Siemens-S7-controller with S7-LAN on MPI/Profibus via secure VPN-tunnel of the TeleRouter