

Under the web-address <https://www.process-informatik.de> are product specific documentations or software-driver/-tools available to download.
If you have questions or suggestions about the product, please don't hesitate to contact us.

Process-Informatik Entwicklungsgesellschaft mbH

Im Gewerbegebiet 1

DE-73116 Wäschenbeuren

+49 (0) 7172-92666-0

info@process-informatik.de

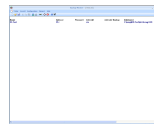
<https://www.process-informatik.de>

Menutree Website:

- + Products / docu / downloads
- + Software
 - + PLC-software-tools
 - + PLC – Data safety
 - + Windows

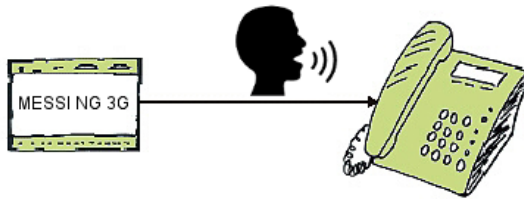


QR-Code Website:



Please make sure to update your drivers before using our products.

Direct Voice-speech-output with MESSI NG 3G



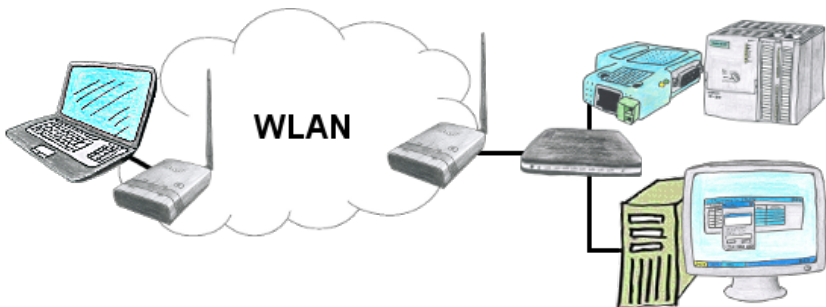
Transmission of fault messages as a voice message to several participants

MESSI NG 3G can send stored-voice-messages to specific recipients depending on the defined input and signal status. To do this, the specified phone-numbers are called according to the phone-number-plan and then the digitized voice-message is transmitted.

Depending on whether the message has been acknowledged or not, the next participant in the numbering-plan will be informed.

Let yourself for example, giving water-levels over the phone, MESSI NG 3G will do this for you.

No direct connected LAN-client required



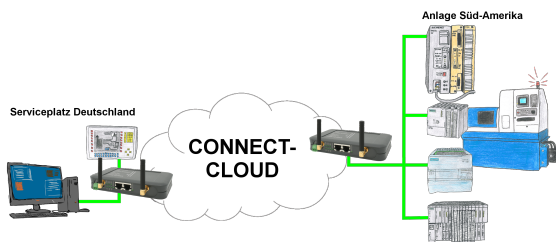
You have some LAN-clients and want to communicate via WLAN with them? No problem, you connect ALF to a switch and you are able to communicate with all this clients. You dont need a direct connect client.

Programming of S5-PLC's via LAN



You would like to respond to your S5-PLC via LAN, but not integrate an Ethernet-CP?
No problem, plug the S5-LAN++ on the PD-interface and access via LAN.

Worldwide remote-access thanks to our own cloud



Worldwide remote-maintenance without additional costs thanks to our own cloud

Your devices connect to your own cloud, no matter where they are in the world. Only your devices are in your own private cloud, no one else has access to the cloud. In addition, you can provide each device with its own connection-password, so that the individual systems are protected despite the private cloud.

No registration on any portals, no hidden additional costs, your devices in your own cloud are always accessible.

This is how remote maintenance/remote access is fun.

Management of the IP address

IP-Zugriffsschutz

Schutzmodus:

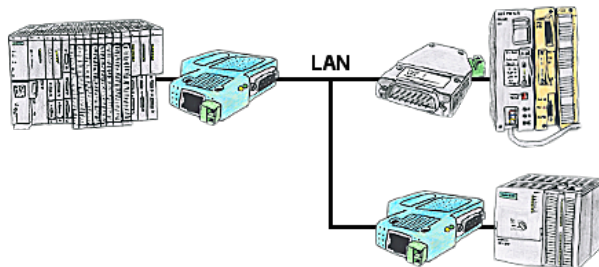
IP-Adresse / IP-Bereich #1:	192.168.178.10	- Bereich (optional)
IP-Adresse / IP-Bereich #2:	192.168.178.100	- 192.168.178.200
IP-Adresse / IP-Bereich #3:	192.168.178.254	- Bereich (optional)
IP-Adresse / IP-Bereich #4:		- Bereich (optional)
IP-Adresse / IP-Bereich #5:		- Bereich (optional)
IP-Adresse / IP-Bereich #6:		- Bereich (optional)
IP-Adresse / IP-Bereich #7:		- Bereich (optional)
IP-Adresse / IP-Bereich #8:		- Bereich (optional)
IP-Adresse / IP-Bereich #9:		- Bereich (optional)
IP-Adresse / IP-Bereich #10:		- Bereich (optional)
IP-Adresse / IP-Bereich #11:		- Bereich (optional)
IP-Adresse / IP-Bereich #12:		- Bereich (optional)
IP-Adresse / IP-Bereich #13:		- Bereich (optional)
IP-Adresse / IP-Bereich #14:		- Bereich (optional)
IP-Adresse / IP-Bereich #15:		- Bereich (optional)

IPs aus Liste verbieten

The IP filter is used to determine whether or not the entered IP-addresses or IP-address-ranges may communicate with the connected controllers via the module.

The list can be edited centrally be switched with a button from "allowed" on "not allowed".

PLC coupling (data exchange between PLC-devices)



Your pumping stations report the water levels of the central control via telephone network. The central office itself can of course transmit commands/messages to the substations as well. Thereto no dedicated line is required, it's sufficient when the stations connect via network (DSL-router).